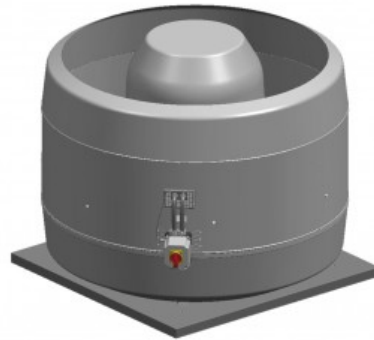




# Centrifugal roof mounted fans

## **CTVT HP Series**

CTVT/4/8-631-7,2/1,8kW



Range of centrifugal roof mounted fans in vertical discharge format, designed for smoke extraction in fire conditions suitable for F400-120 application, base parts manufactured in galvanised sheet steel, cowls manufactured from spun aluminium, centrifugal backward curved impellers manufactured in double coated painted sheet steel (cataphoresis + polyester), discharge proof guard, and ON-OFF electrical isolator switch incorporated.  
Acoustic version (INS) with silencer integrated at the fan discharge, to reduce outlet noise level.  
All model suitable for air stream temperature up to 120°C continuous.

### **Motors**

4 pole motors, three phase 400V-50Hz, IP55, Class F.  
Speed controllable by frequency drive.

The electrical installation must be equipped with a security system which allows the maximum speed of the fans in cas of fire.

### **On request**

4/8 and 4/6 pole motors.

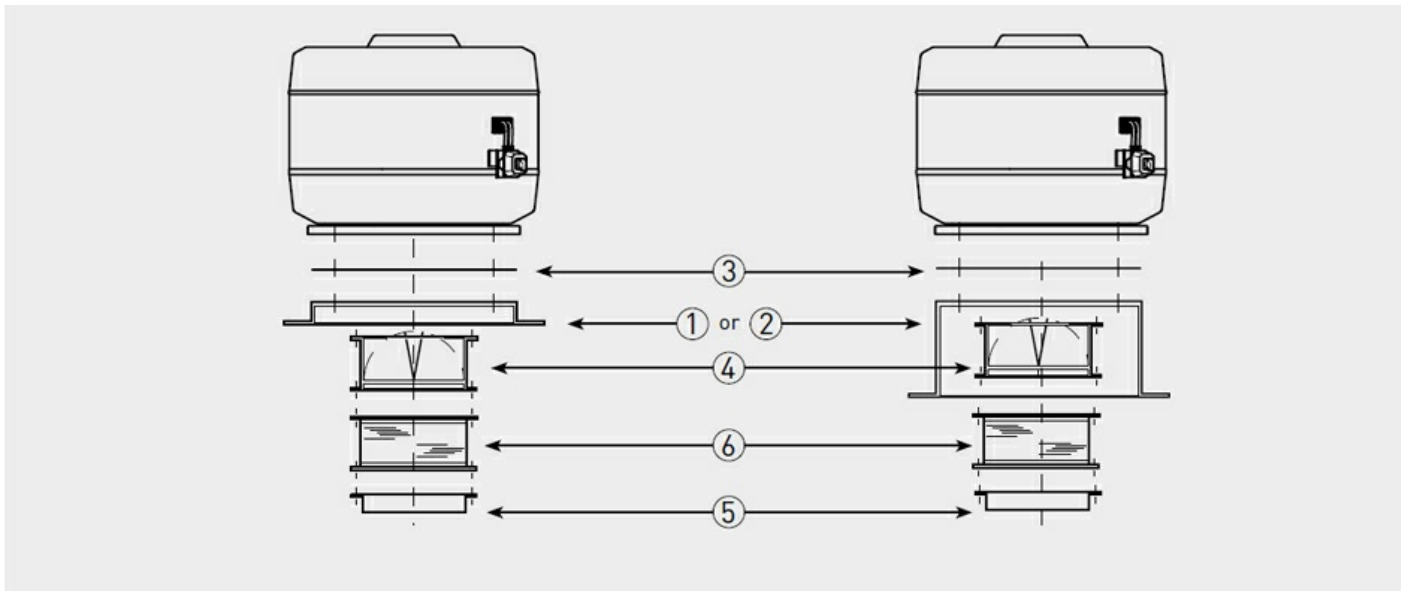
### **+ Acoustic characteristics**

Unfortunately an error occured.

## + Technical characteristics

Unfortunately an error occurred.

## + Installation



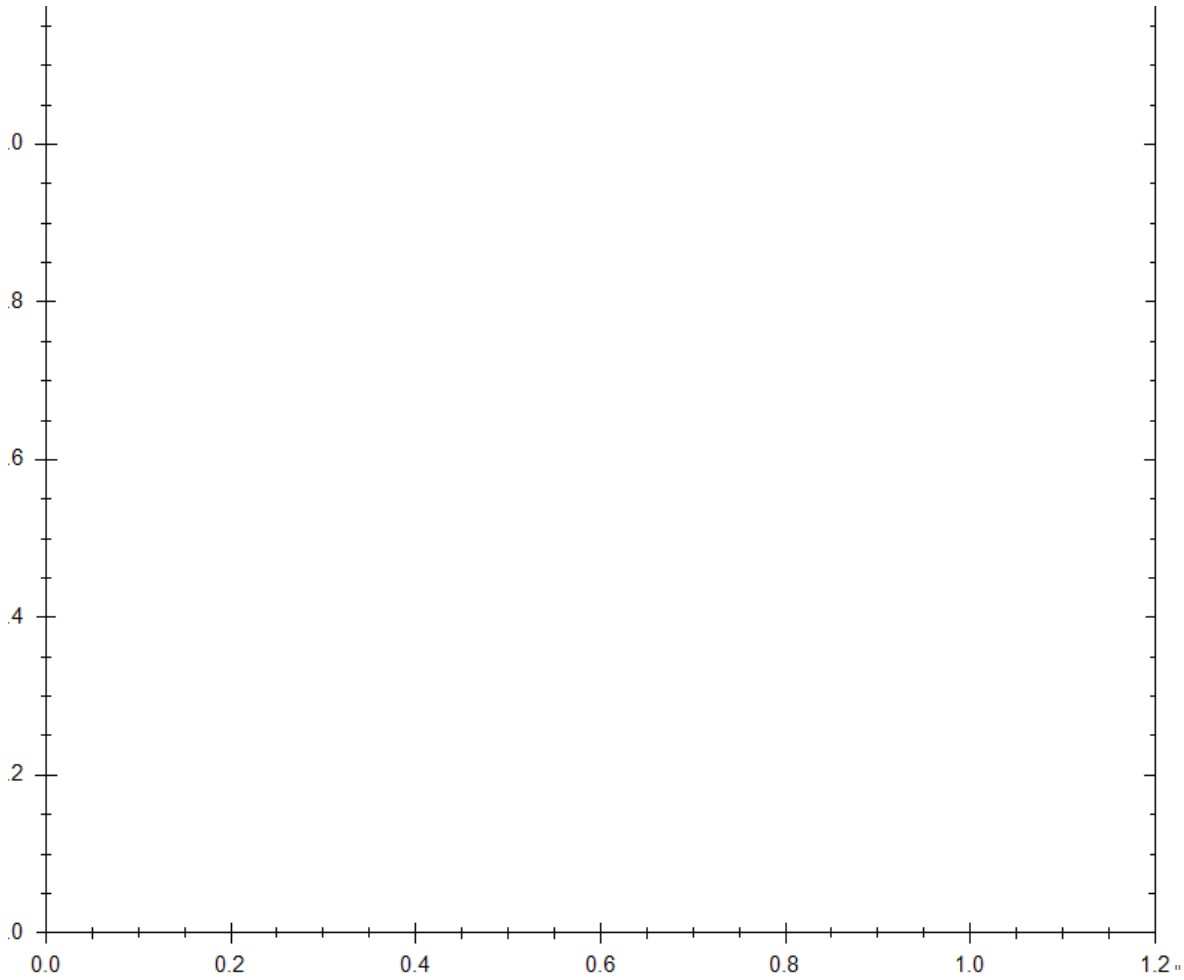
Fan model	1 Sealing frame	2 Flat roof insulated up stand	3 Accessory adapter plate	4 Back draft shutter	5 Flange with spigot	6 Flexible coupling
CTVT/4-632	JMS-905	JBS-905	JPA-905	JCA-905 N	JBR-905 N	JAE-905 N
CTVT/4-631						
CTVT/4-712	JMS-1250	JBS-V-1000	JPA-1250	JCA-1250 N	JBR-1250 N	JAE-1250 N
CTVT/4-711						
CTVT/4-802						
CTVT/4-801						
CTVT/4-902	JMS-1250	JBS-V-1000	JPA-1250	JCA-1250 N	JBR-1250 N	JAE-1250 N

## + Dimensions

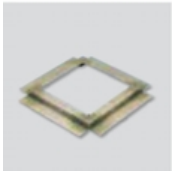
Unfortunately an error occurred.

11

## + Curves



## + Mounting Accessories



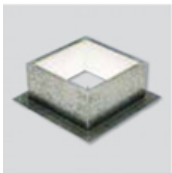
**JMS**  
**Sealing frame**  
- For mounting a roof fan on an up stand or base.  
- Supplied with screws and gasket for a complete weatherproof seal.



**JBR N**  
**Flange**  
- For use when circular connection is required directly to the fan.  
- To be mounted at the fan inlet with the JPA plate or fixed directly to the fan base (rivets or screws not supplied).



**JPA**  
**Accessory adapter plate**  
- Used when mounting the accessories (JCA, JBR, JAE).  
- Allows the fan to be disconnected from the upstand without having to remove the duct.



**JBS/JBS-V**  
**Flat roof up stand**  
- For mounting a fan on a flat roof without up stands.  
- For use on horizontal roofs.  
- Internal insulation to prevent condensation.  
- Supplied with screws and gasket for a complete weather seal.



**JAE N**  
**Flexible coupling**  
- Reduces the transmission of vibrations when the duct is connected directly to the fan.  
- To be mounted at the fan inlet with JPA plate.



**JCA N**  
**Backdraft shutter**  
- Prevents backdraft when the fan is not operating.  
- To be mounted at the fan inlet with the JPA plate.