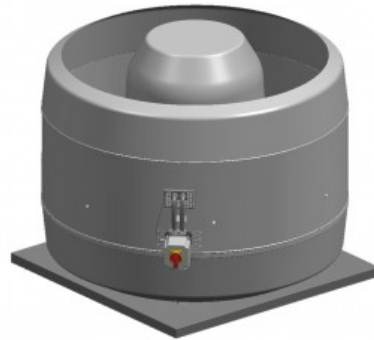




Centrifugal roof mounted fans

CTVT HP Series

CTVT/4-631 7,5KW INS
(400V50HZ) F400 VE



Range of centrifugal roof mounted fans in vertical discharge format, designed for smoke extraction in fire conditions suitable for F400-120 application, base parts manufactured in galvanised sheet steel, cowls manufactured from spun aluminium, centrifugal backward curved impellers manufactured in double coated painted sheet steel (cataphoresis + polyester), discharge proof guard, and ON-OFF electrical isolator switch incorporated.
Acoustic version (INS) with silencer integrated at the fan discharge, to reduce outlet noise level.
All model suitable for air stream temperature up to 120°C continuous.

Motors

4 pole motors, three phase 400V-50Hz, IP55, Class F.
Speed controllable by frequency drive.

The electrical installation must be equipped with a security system which allows the maximum speed of the fans in cas of fire.

On request

4/8 and 4/6 pole motors.

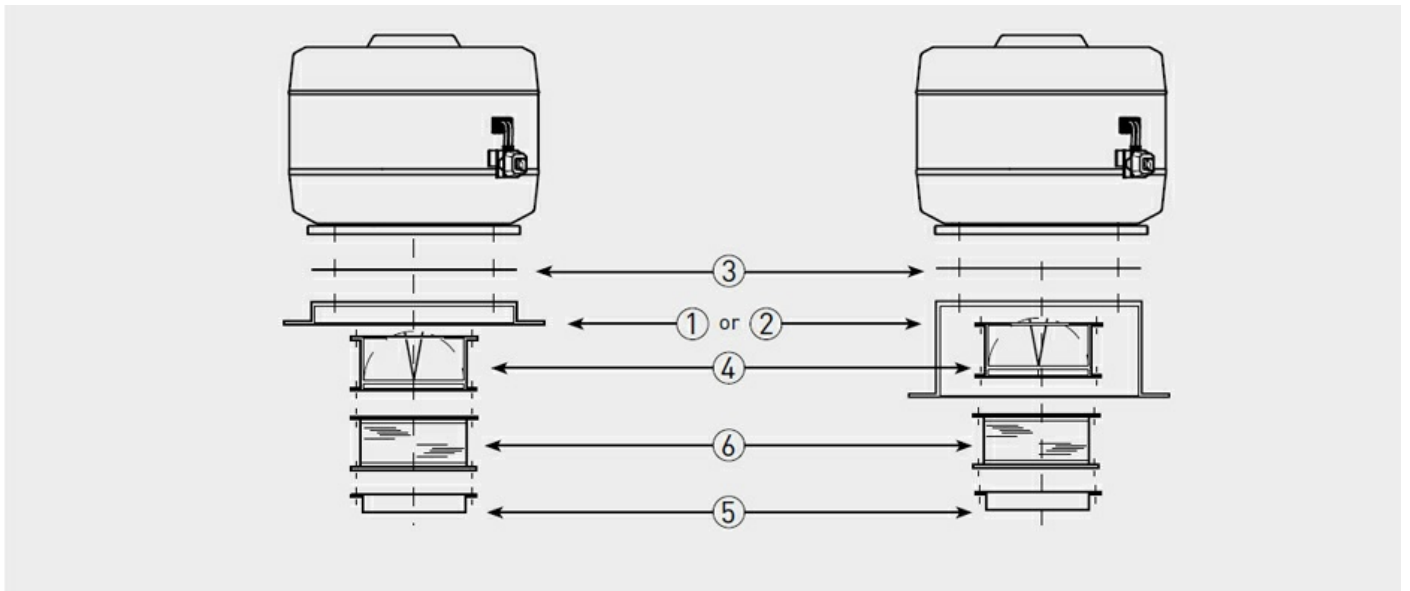
+ Acoustic characteristics

Hz	63	125	250	500	1k	2k	4k	8k	Overall
Outlet (LwA)	75	84	93	89	89	88	84	77	97
Outlet LpA @ 1.5m	60	69	78	74	74	73	69	62	82

+ Technical characteristics

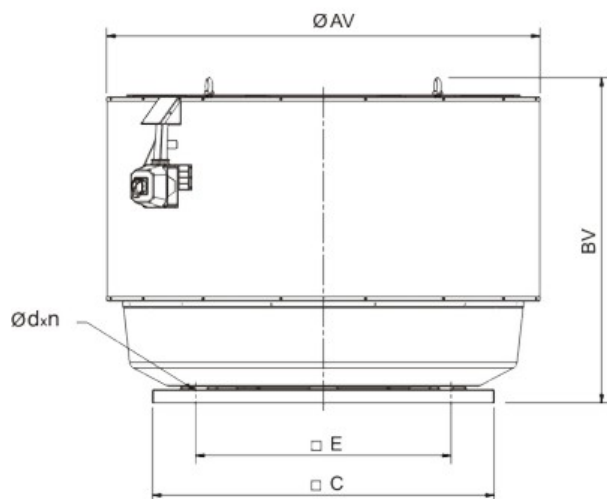
Unfortunately an error occurred.

+ Installation



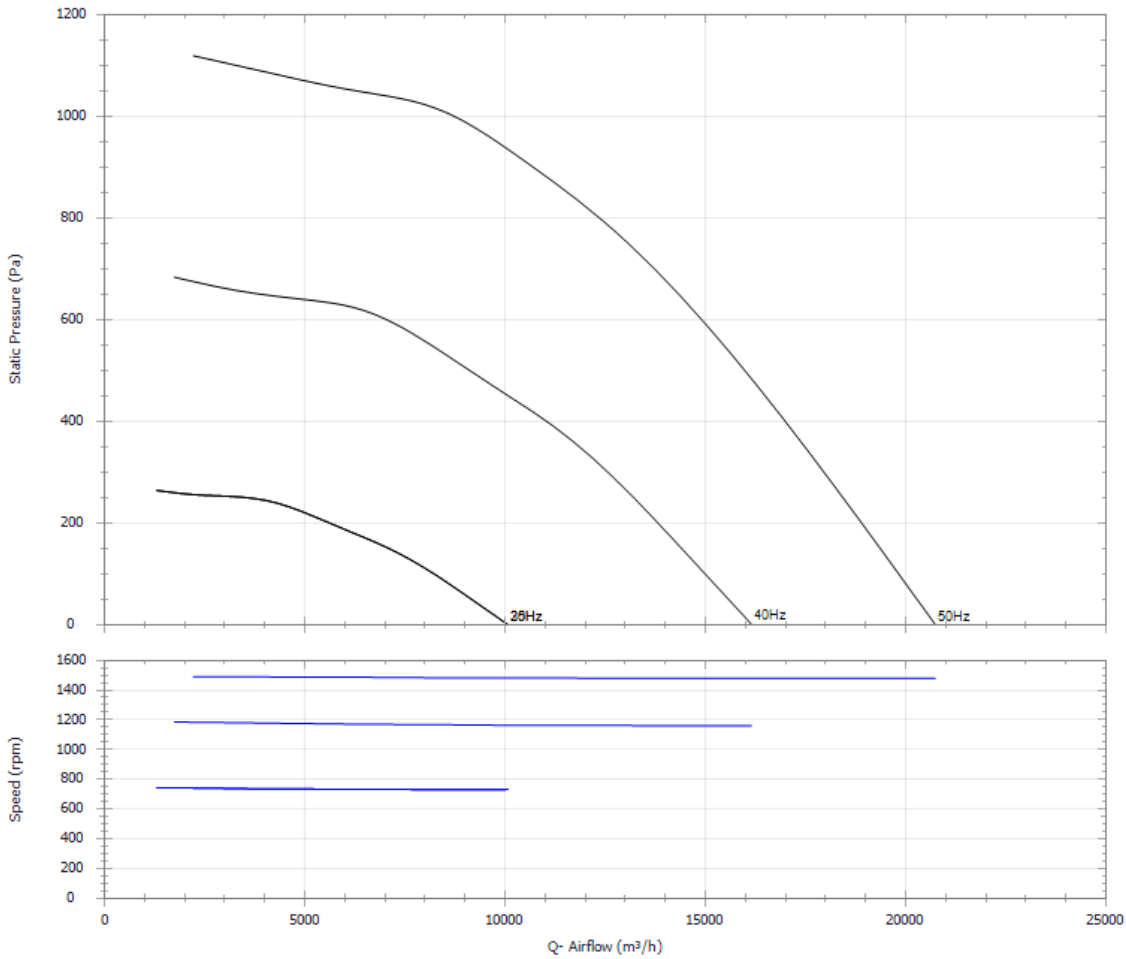
Fan model	1 Sealing frame	2 Flat roof insulated up stand	3 Accessory adapter plate	4 Back draft shutter	5 Flange with spigot	6 Flexible coupling
CTVT/4-632	JMS-905	JBS-905	JPA-905	JCA-905 N	JBR-905 N	JAE-905 N
CTVT/4-631						
CTVT/4-712	JMS-1250	JBS-V-1000	JPA-1250	JCA-1250 N	JBR-1250 N	JAE-1250 N
CTVT/4-711						
CTVT/4-802						
CTVT/4-801						
CTVT/4-902	JMS-1250	JBS-V-1000	JPA-1250	JCA-1250 N	JBR-1250 N	JAE-1250 N

+ Dimensions

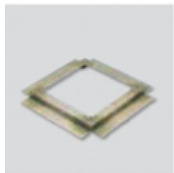


AV	BV	C	d	E	n
1342	978	905	14	750	4

+ Curves



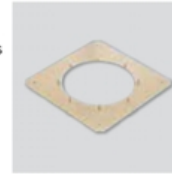
+ Mounting Accessories



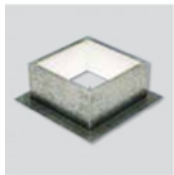
JMS Sealing frame
 - For mounting a roof fan on an up stand or base.
 - Supplied with screws and gasket for a complete weatherproof seal.



JBR N Flange
 - For use when circular connection is required directly to the fan.
 - To be mounted at the fan inlet with the JPA plate or fixed directly to the fan base (rivets or screws not supplied).



JPA Accessory adapter plate
 - Used when mounting the accessories (JCA, JBR, JAE).
 - Allows the fan to be disconnected from the upstand without having to remove the duct.



JBS/JBS-V Flat roof up stand
 - For mounting a fan on a flat roof without up stands.
 - For use on horizontal roofs.
 - Internal insulation to prevent condensation.
 - Supplied with screws and gasket for a complete weather seal.



JAE N Flexible coupling
 - Reduces the transmission of vibrations when the duct is connected directly to the fan.
 - To be mounted at the fan inlet with JPA plate.



JCA N Backdraft shutter
 - Prevents backdraft when the fan is not operating.
 - To be mounted at the fan inlet with the JPA plate.