



# CENTRIFUGAL SINGLE INLET PLASTIC FANS CMPT (1) Series

CMPT/2-140 LG0(PP)  
(230/400V50HZ)



## ATEX versions

ATEX versions available for 3-phase models.  
For ambient working temperature -10°C to +40°C.  
Motor IP55, Class F.

ATEX Flameproof - Gas

⊕ II 2G Exd IIB T4

⊕ II 2G Exd IIB+H2 T4 (with motor Exd IIC T4)

ATEX Increased safety - Gas

⊕ II 2G Exe II T3

To select CMPT (1) ATEX refer to performance data, or  
Easyvent. Note electrical data may vary for ATEX  
motors."



Range of single inlet direct drive centrifugal fans manufactured from tough polypropylene plastic and designed for extraction of corrosive fumes. Provided with forward curved centrifugal impellers manufactured from polypropylene plastic. Available, depending upon the model, with single or three phase motors in 2 or 4 poles.

## Motors

All motors are IP55, class F.

Electrical supply:

-Single phase 230V-50Hz, on request.

-Three phase 230/400V-50Hz.

(See characteristics chart).

## Additional information

The scroll can be orientated.

Standard supplied position: LG 0.

## On request

PVC versions.

## + Attributes

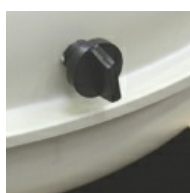


**Tough, durable design**  
Scroll made of high grade polypropylene providing a high robustness.



**Impeller dynamically balanced**

Forward curved centrifugal impellers manufactured from polypropylene plastic and dynamically balanced, with a threaded cap. according to ISO 1940



**Condensation drain hole**

Draining hole allowing the evacuation of condensation. Provided

standard.

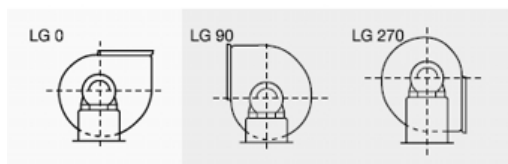
## + Acoustic characteristics

Unfortunately an error occurred.

## + Technical characteristics

Unfortunately an error occurred.

## + Orientation



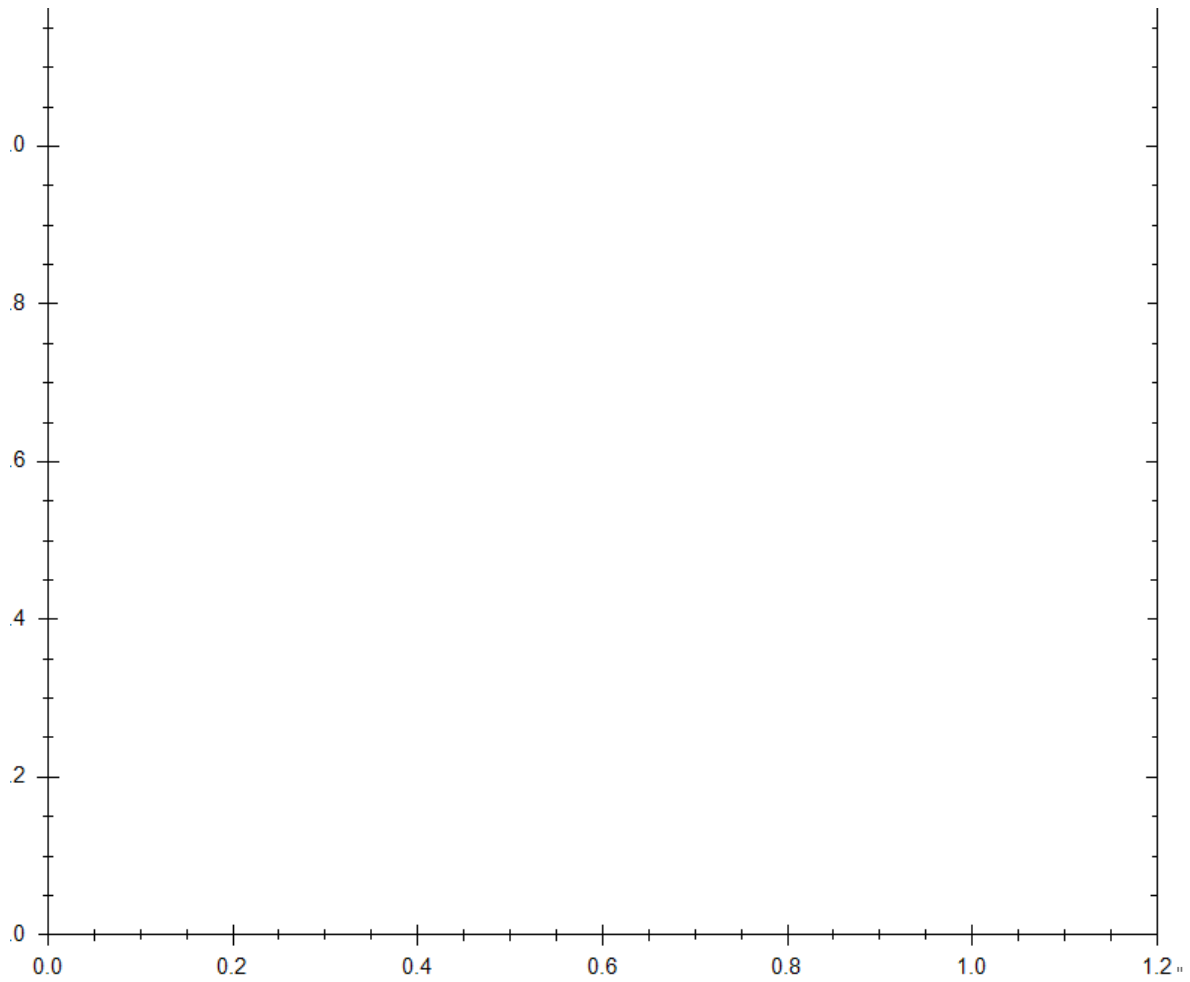
Standard position: LG0.

## + Dimensions

Unfortunately an error occurred.

11

## + Curves



## + Mounting Accessories



**CARP**  
Manually operated  
circular damper.



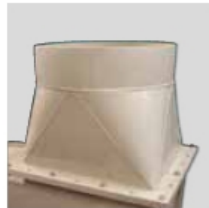
**CTP**  
Exhaust cowl.



**MFP**  
Circular flexible  
connector.



**APP**  
Round outlet  
protection.



**ACP**  
Circular connector.



**CMP**  
Motor shield.