



# CENTRIFUGAL IN-LINE FANS

## VENT Series

VENT-200B (230V 50Y60HZ)  
(V582005) VE



Range of in-line duct centrifugal fans, manufactured from high grade corrosion resistant pressed galvanised steel and supplied as standard with a prewired wiring junction box and a robust mounting foot. All model include an enclosed type, single-phase external rotor motor with factory matched backward curved nonstalling impeller. (1) Models 355 and 400 are manufactured in sheet steel protected against corrosion by cataforesis primer and black polyester paint finish.

### Motors

100 □ 315 models: Motors are single phase or three phase (models 355 and 400), with ball bearings and safety thermal overload protection.

### Additional Information

□L□ version: High performance models.

□B□ Version: Standard performance models for lower noise level requirements.

Impellers from 100 to 160 models are manufactured from injection moulded plastic.

### + Attributes



**Mounting foot**  
Supplied with unit as standard.

### + Acoustic characteristics

Unfortunately an error occurred.

## + **Technical characteristics**

Unfortunately an error occurred.

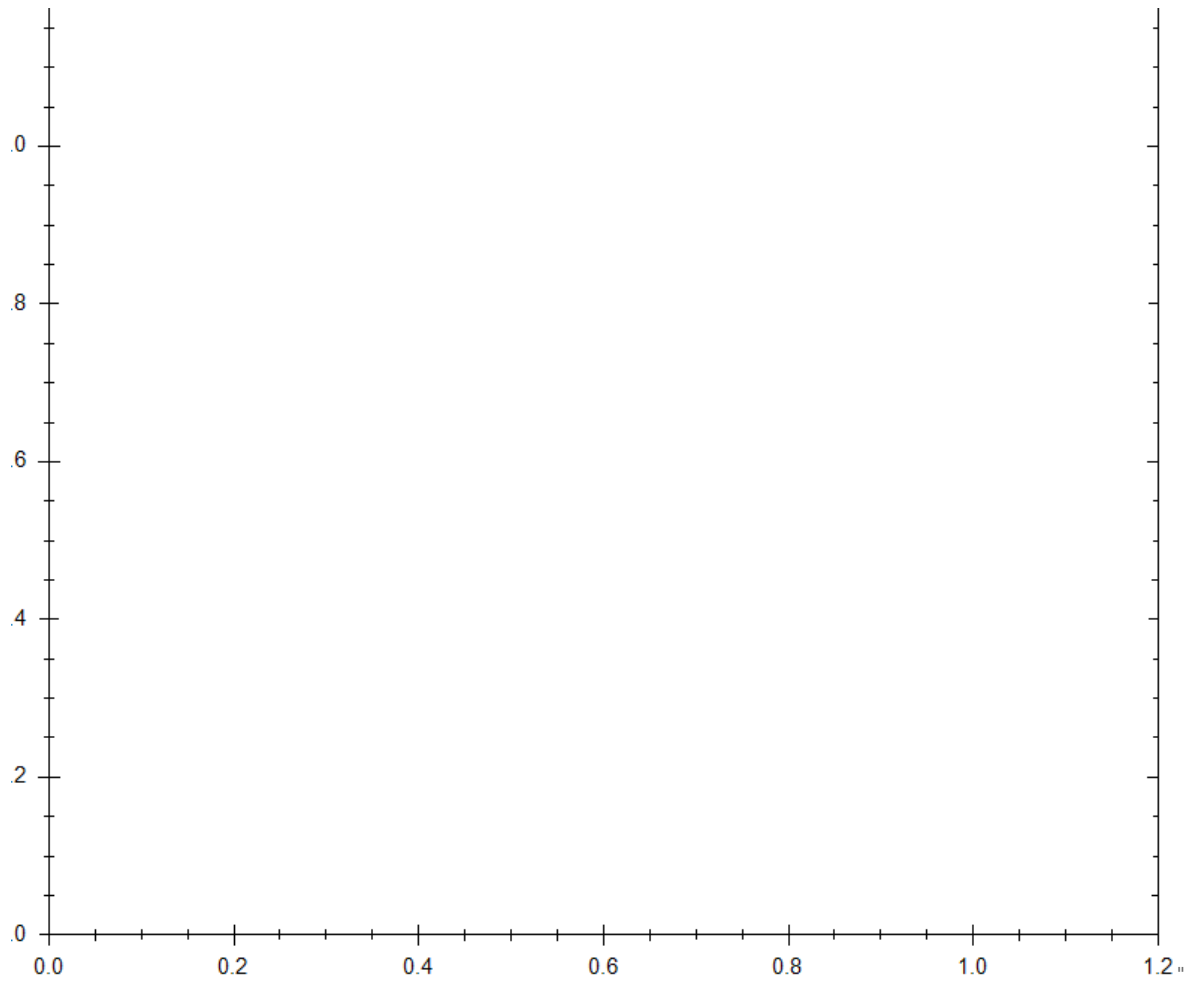
"

## + **Dimensions**

Unfortunately an error occurred.

"

## + Curves



## + Mounting Accessories



**MBE**  
Electric heater.



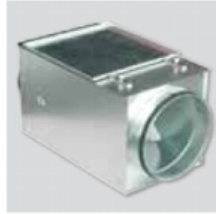
**MBW**  
Hot water coil.



**SIL**  
Circular sound attenuators.



**MFL-G4**  
Filtration box of G4 grade filtration.



**MFL-F**  
Box in galvanized steel for inserting the MFR F5, F6 and F7 filters.



**Mounting foot**  
(supplied with unit as standard).



**ACOP-VENT**  
Flexible connectors.



**DEF-VENT**  
Protection grille.



**GSA M0**  
Aluminium flexible ducting.



**GSI M0**  
Insulated aluminium ducting.



**CX**  
Worm drive duct connectors.



**BOC**  
Metal inlet valves.



**BOR**  
Plastic inlet valves.



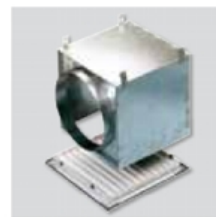
**GCI**  
Circular inlet grilles.



**GRI**  
Interior square grilles.



**VR**  
GCI mounting frame.



**RP**  
GRI mounting frame.



**CAR**  
Backdraught shutters.

For more information see Mounting accessories.

## + Electrical Accessories



**REB**  
Electronic single phase speed controllers.



**RMB**  
Autotransformer single phase speed controllers.



**PARO/MARCHA 5P and 8P**  
ON/OFF electrical isolation switch.



**PULSER**  
Electric heater controllers for 1Ph models up to 3600W and 3Ph models up to 6400W.



**TTC 2000**  
Electric heater controllers for 3 phase models.



**TG-K**  
Duct temperature sensor.



**TG-R**  
Room wall mounted temperature sensor.

For more information see Electrical accessories.